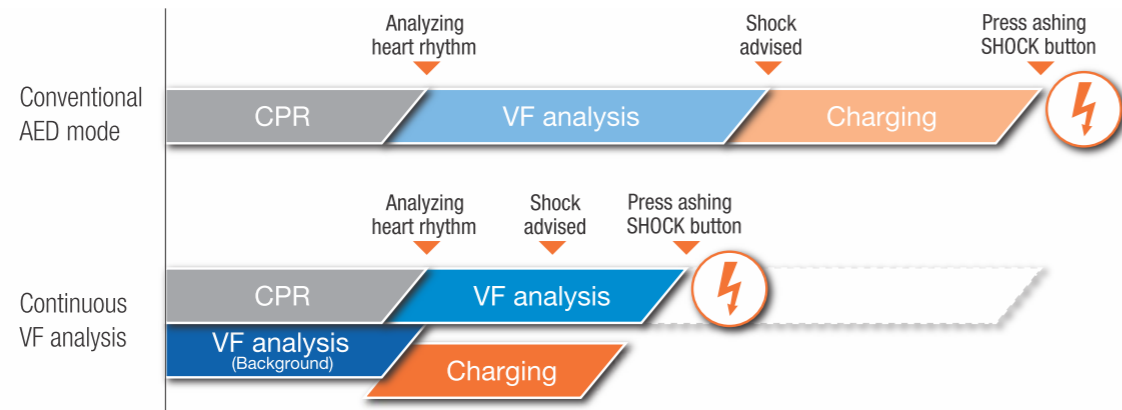


Save a life with innovation

Continuous VF analysis

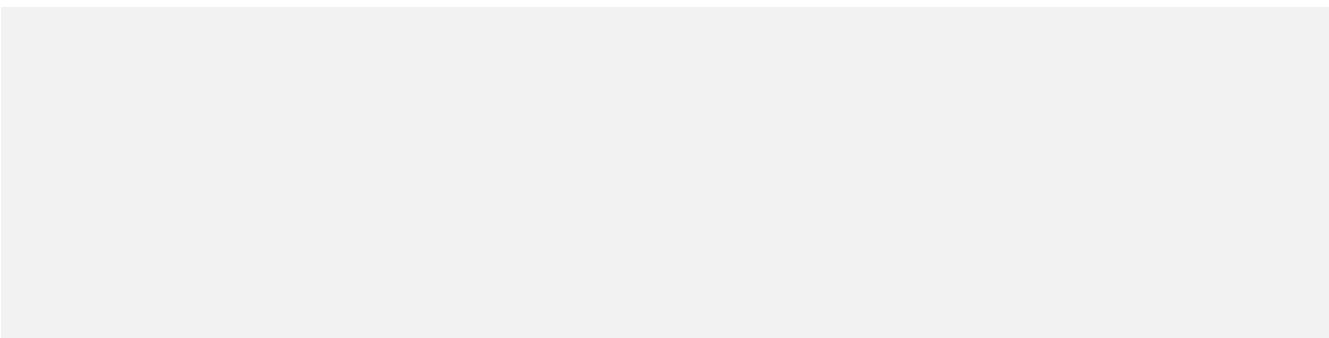
Continuous VF analysis is available on AED-3100. With this function, the ECG waveform can be analyzed even during CPR and energy charging starts before the shock is advised. This helps you deliver faster defibrillation than ever before.



Fast analysis and charging

It takes less than 15 seconds from turning the power on to discharge. Faster charging time helps you deliver energy quickly when VF is observed.

Specifications



Voice Prompt English / Hindi / Japanese

AED Training Unit

TRN-3100



Options

- Battery Pack
- AED Box
- Defibrillation Pads
- Hindi Voice Prompt
- AED Bag

This brochure may be revised or replaced by Nihon Kohden at any time without notice.



NIHON KOHDEN INDIA PVT. LTD.

308, Tower-A Spazedge, Sector-47,
Sohna Road, Gurgaon - 122 002, Haryana
Phone : +91 124 493 1000 Fax: +91 124 493 1029
Email : info_nki@nkc.co.jp
CIN No.: U33110HR2011PTCO41863

Customer Care Toll Free No.: 1800-103-8182

NIHON KOHDEN CORPORATION

1-31-4 Nishiochiai, Shinjuku-ku, Tokyo 161-8560, Japan
Phone +81 (3) 5996-8036 Fax +81 (3) 5996-8100
www.nihonkohden.com

cardiolife AED

Automated External Defibrillator

AED-3100

निर्देश हिन्दी में
भी उपलब्ध



Fighting Disease with Electronics



Take action, **Save** a life

Always be ready

During daily self-test, AED checks automatically its condition including battery, pads and failure of circuit. You can see your AED condition with simple status indicator. In emergency situation, AED-3100 always be ready to save a life.



Safe and efficient treatment

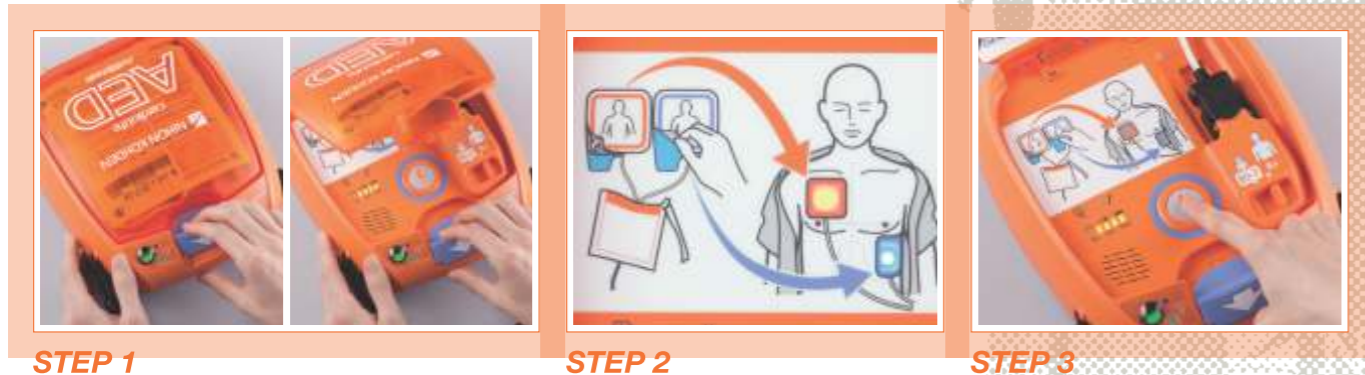


International resuscitation guideline[□] recommends to reduce the energy for child patient to avoid burning of heart muscle. AED-3100 can reduce the energy to 50/70J just by switching the energy switch to child position. No need to change the pad and require any other action.

[□] American Heart Association Guidelines for CPR and ECC/ European Resuscitation Guidelines

Within the reach of anybody

AED should be easy and intuitive to use for anybody. Even if you are not a medical professional, AED-3100 is ergonomic design for you to use it without doubt and interruption.



STEP 1

STEP 2

STEP 3

STEP 1 Open the lid

Open the lid to turn on the power. The voice instruction starts immediately to guide you how to operate AED.

STEP 2 Attach the pads to the patient

After attaching the pads, AED immediately starts to analyze ECG. Defibrillation pads have the colors (blue/orange) to make you easy to attach the pads as illustrated.

STEP 3 Push the button

If the shock is needed, the shock button is flashing. Push the button to deliver the electrical shock to the patient.

Durable and compact

AED-3100 has wide range of operating temperature from -5°C to 50°C . As it comply with IP55 standard, it can be used in severe circumstances. Also, AED-3100 is 40% smaller compared with previous model, AED-2100K. AED-3100 has compact body which you need no large space to install, and you can bring it easily to emergency site.



Automated External Defibrillator
AED-3100